



# BARD

## Application Webinar

**July 7<sup>th</sup>, 2021**

**4 PM Israel**

**9 AM EDT**



The United States – Israel Binational  
Agricultural Research & Development Fund





**BARD**

**WELCOME**

---



The United States – Israel Binational  
Agricultural Research & Development Fund



# The BARD Mission

fund mission-oriented, strategic and applied research

conducted  
jointly by US and  
Israeli scientists

in all areas of  
agriculture

deal with an  
agricultural issue or  
problem

support  
workshops and  
fellowships







# The BARD Mission

Proposals are expected to yield tangible results that could be implemented within a reasonable timeframe after completion of the project



The United States – Israel Binational  
Agricultural Research & Development Fund



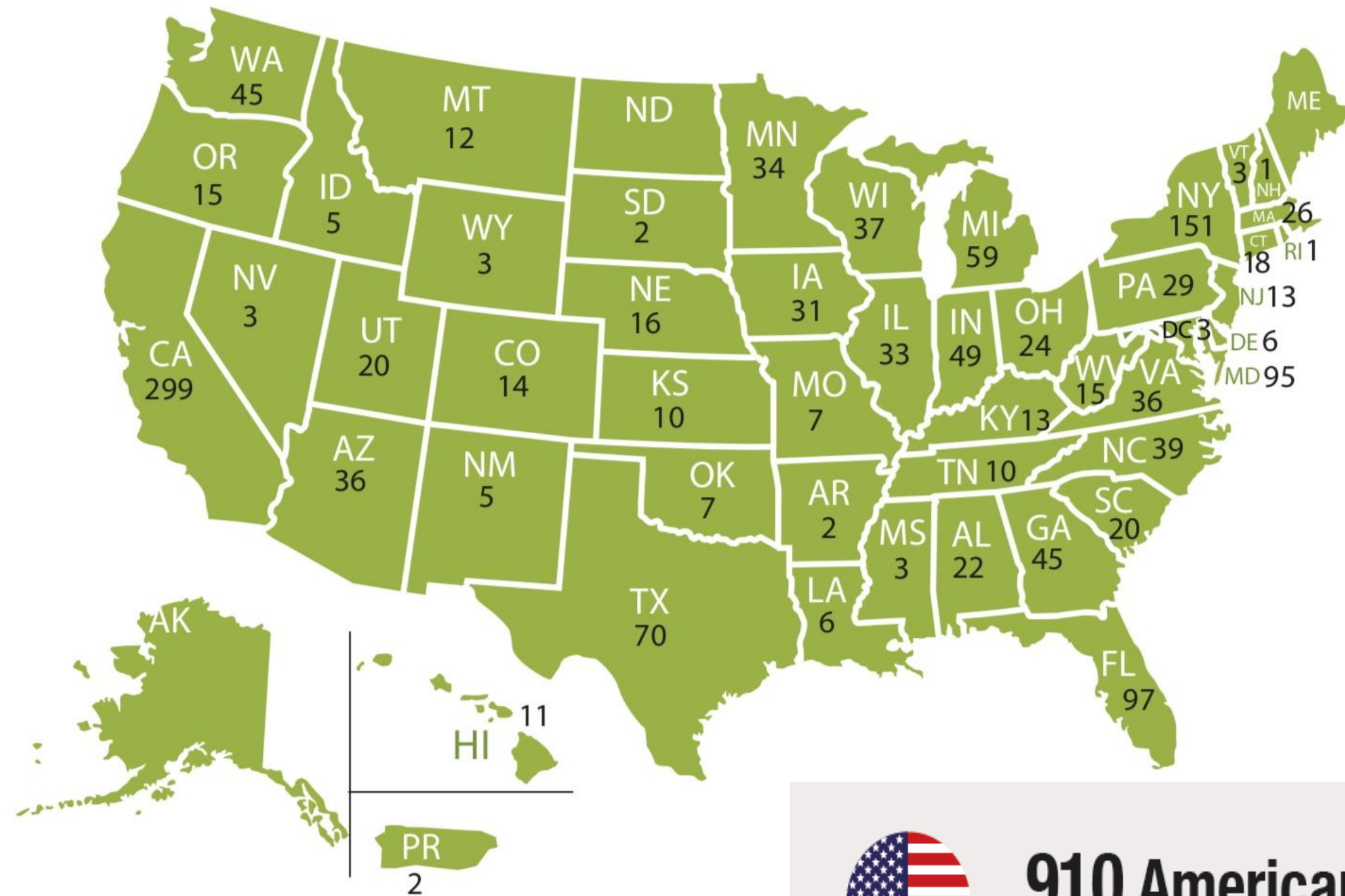
# The Research Budget

- Interest bearing endowment of \$110 M established through matching US – Israel contributions
- Matching annual supplement of \$1.0 M





# BARD by the numbers



## FUNDED RESEARCH BY STATE



The United States – Israel Binational  
Agricultural Research & Development Fund



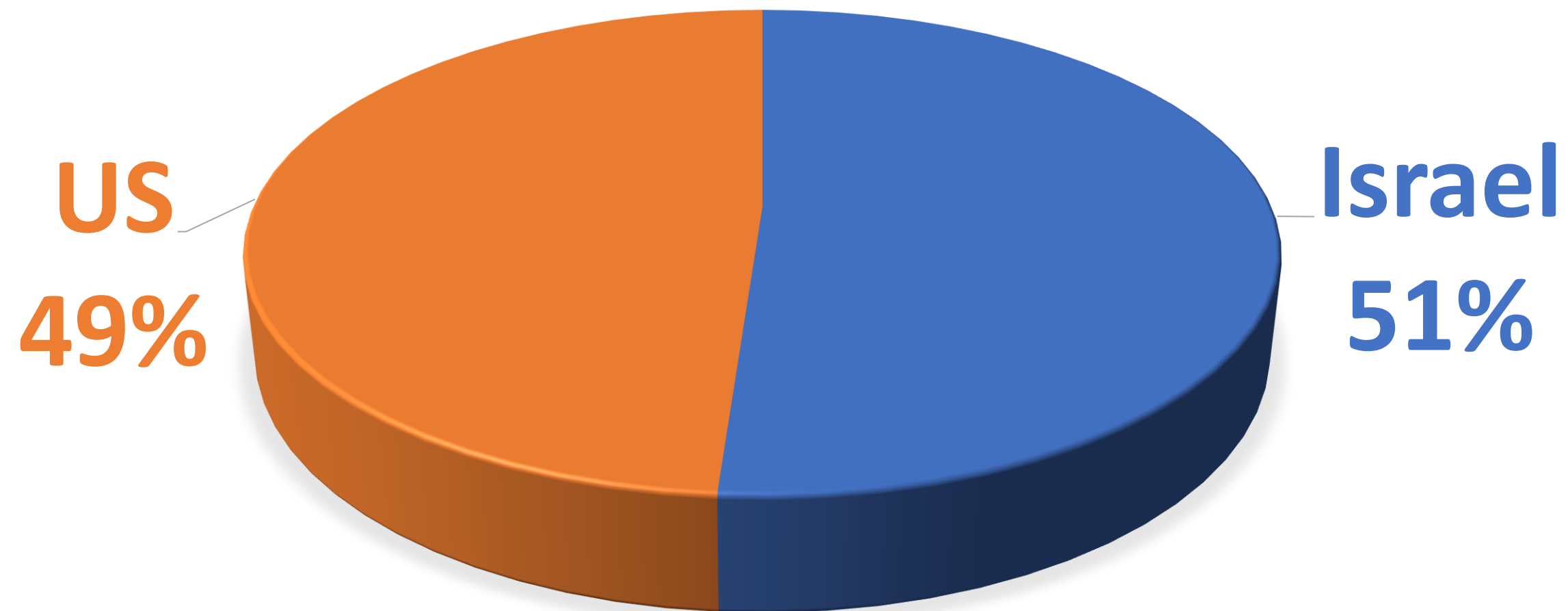
**910 American**  
principal investigators



**630 Israeli**  
principal investigators

# BARD by the numbers

## BUDGET BY COUNTRY 2011-2020



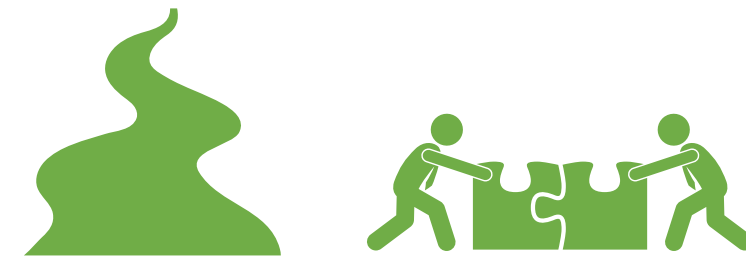
# BARD by the numbers



**Investment**  
**\$315 M**



**Return on investment**  
**1:16**



**Long lasting partnerships**  
**82% continued working together**



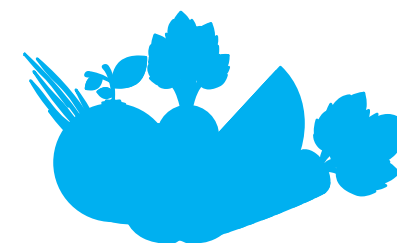
**Academic publications**  
**5,600 publications**



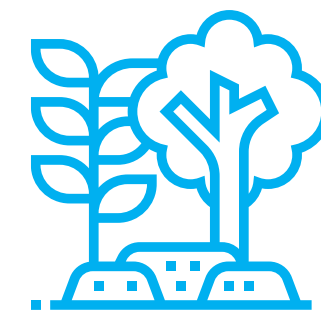
**Commercial engagements**  
**new jobs**



**Patents breeding rights and regulations**



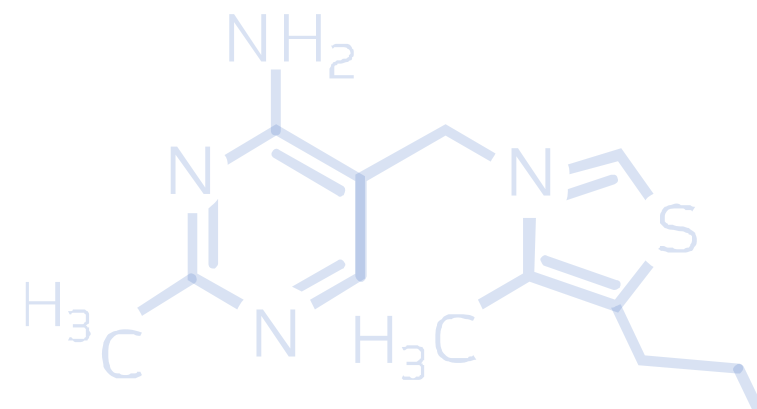
**New varieties**



**Environmental impact**



The United States – Israel Binational  
Agricultural Research & Development Fund





# Research priority areas

as of 2021





# The Proposal Selection Process

Ad-hoc reviewers  
5 (or more) peer reviews per proposal

8 Review Panels  
independent recommendations (2-5 members from *each* country) provided on each proposal

Funding

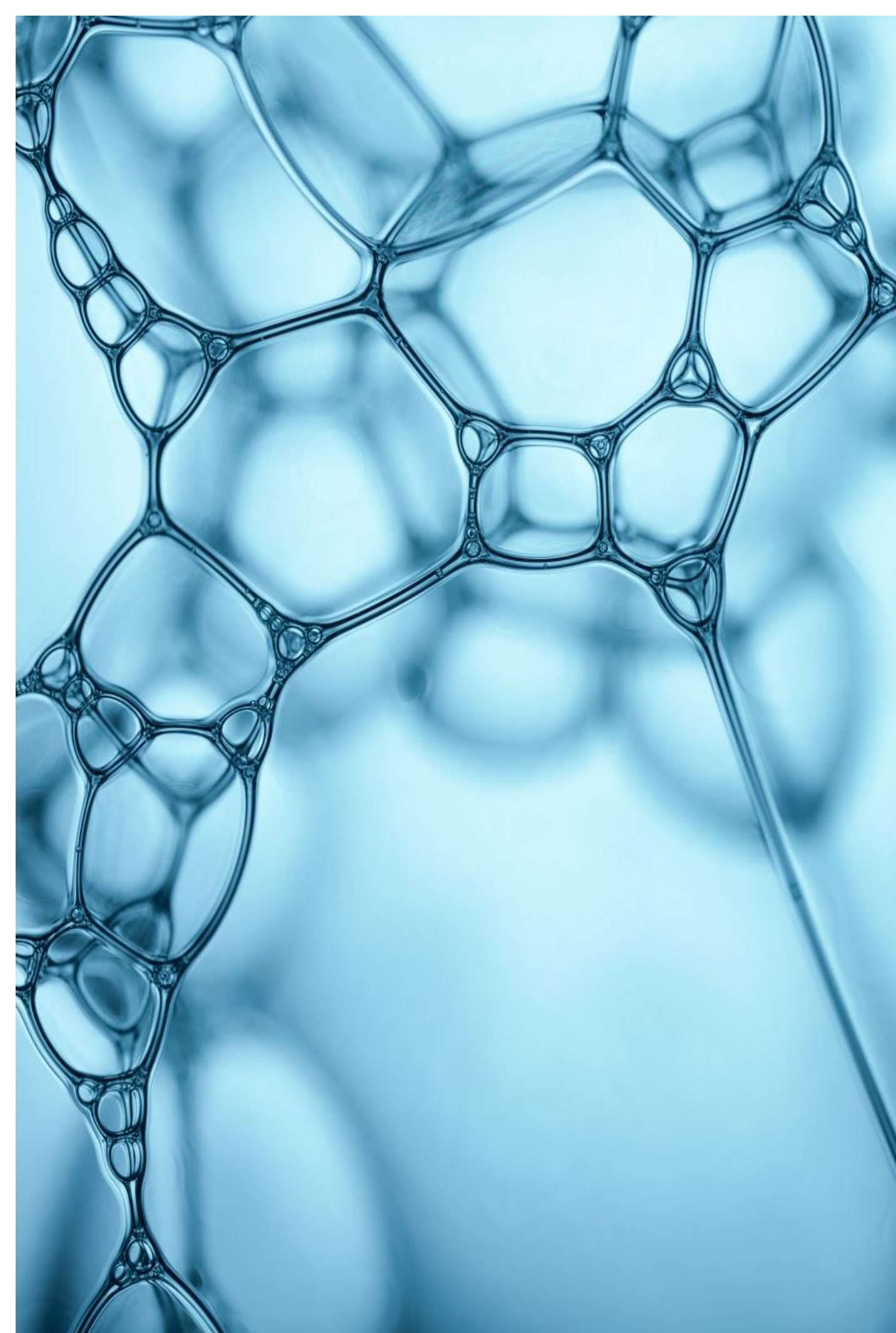
Board of Directors  
(3 from *each* country)  
approve the final portfolio

Technical Advisory Committee (TAC)  
(5 senior scientists from *each* country) select interdisciplinary portfolio



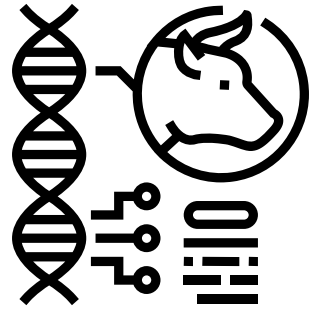
# Proposal Selection Criteria

- Scientific/technological merit
- Feasibility of objectives
- Anticipated benefits to agriculture & environment of both countries
- Proposed collaborative arrangements





# Panels



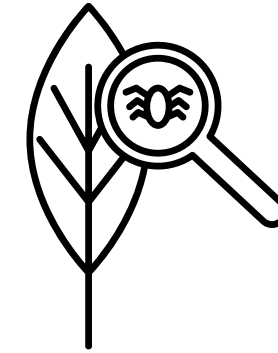
**Animal Production**



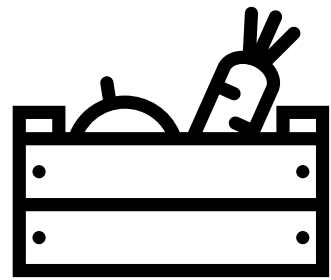
**Animal Health**



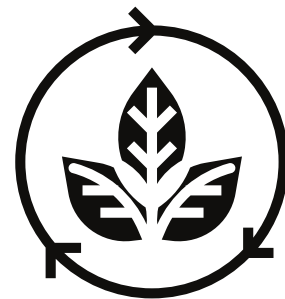
**Crop Production**



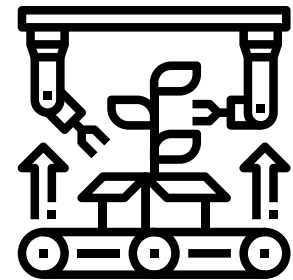
**Crop Health**



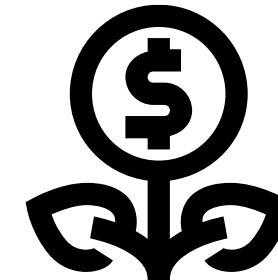
**Food Products -  
Quality, Safety,  
Security**



**Environment &  
Renewable  
Resources**



**Agricultural  
Engineering**



**Agricultural  
Economics**







# BARD



# Applying

---



The United States – Israel Binational  
Agricultural Research & Development Fund



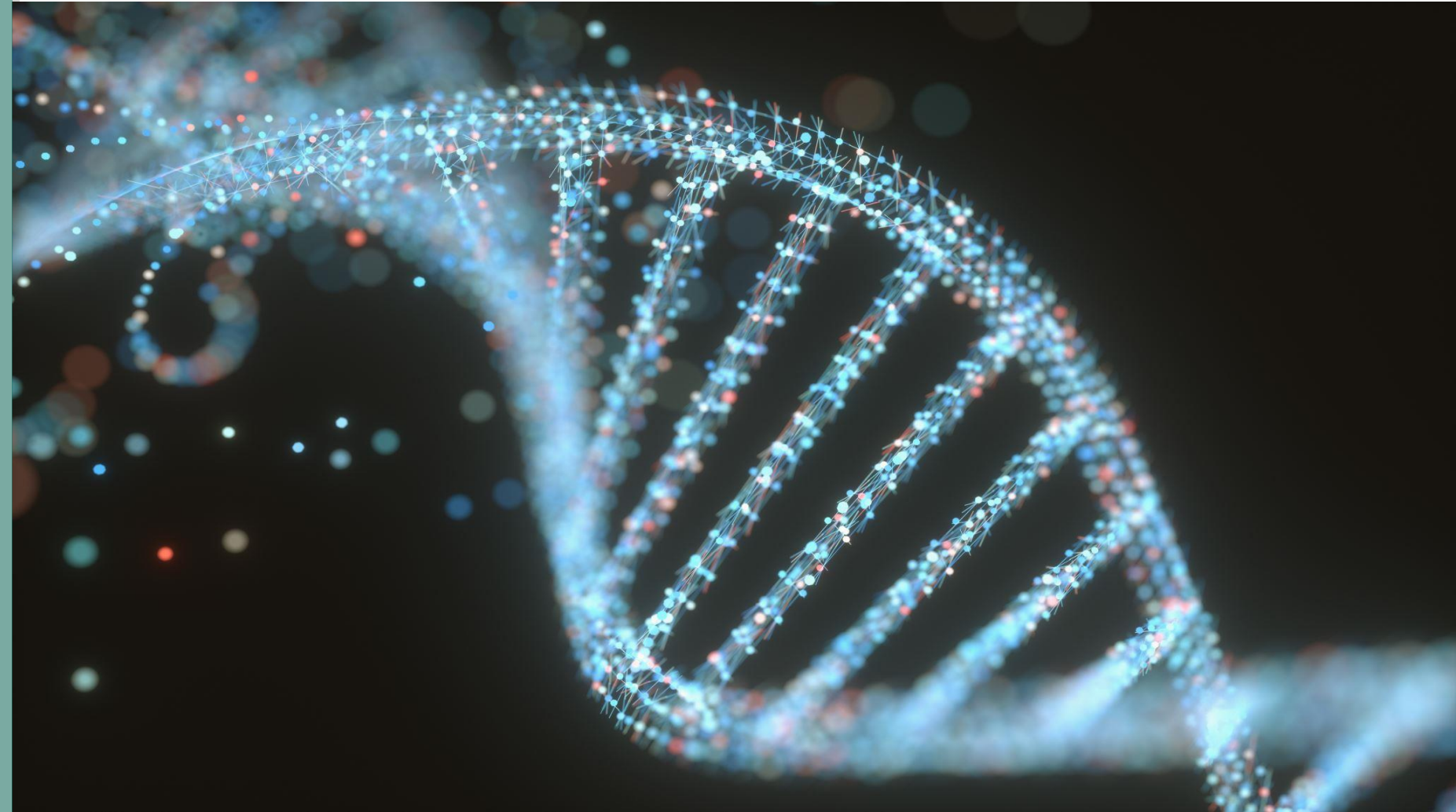
# Who can apply?

- Researchers in Non-Profit Institutions in US or Israel
- Concurrent funding policy
  - PI is from one country
  - Co-PI from the other country
  - No limit on collaborating investigators*



# The BARD Research Grant

- 3 years maximum
- \$310,000 for both sides/3 years
- Only one revision allowed





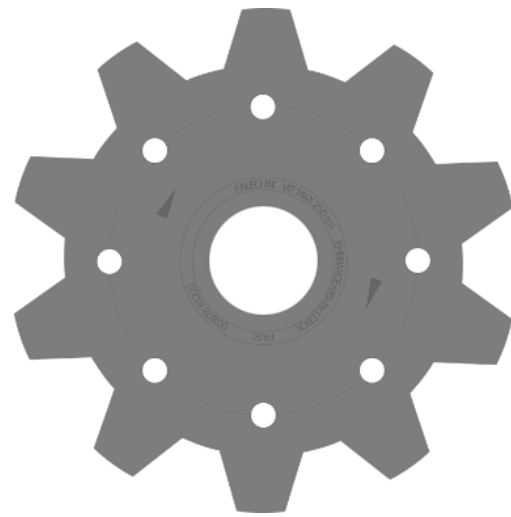
# Proposal Components

- Cover Page (system generated)
- Abstract (text)
- Detailed Description of the Research Plan -15 pages (pdf)
- Expected Results/Timetable/Details of Cooperation/ Facilities/Data Management  
5 pages (pdf)
- Relevant Bibliography (pdf)
- CVs - 2 pages/Investigator (pdf)
- Budget Summary Table (system generated)
- Description of the Budget (pdf)
- Letters of Cooperation (pdf)



# Suggestions for Success (1/2)

Attention to components of the research plan



Research Problem



Feasible  
Objectives



Hypotheses



Preliminary  
Results





# Suggestions for Success (2/2)

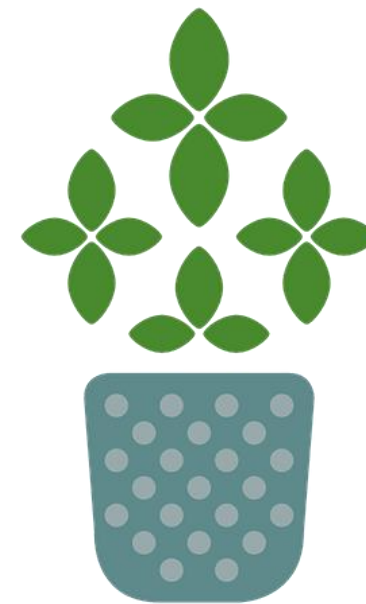
Attention to components of the research plan



Strategies,  
Procedures and  
Methodologies



Experimental  
Details & Pitfalls



Expected  
Results



Anticipated  
Contribution to  
Agriculture and/or the  
Environment

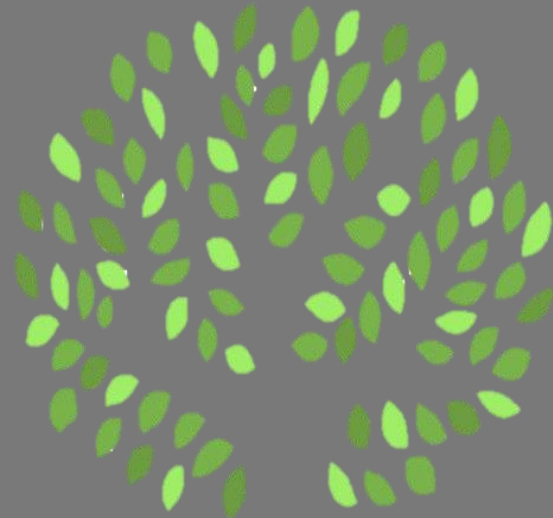


# Most Common Criticisms

Too ambitious



Lacking or unfounded hypothesis



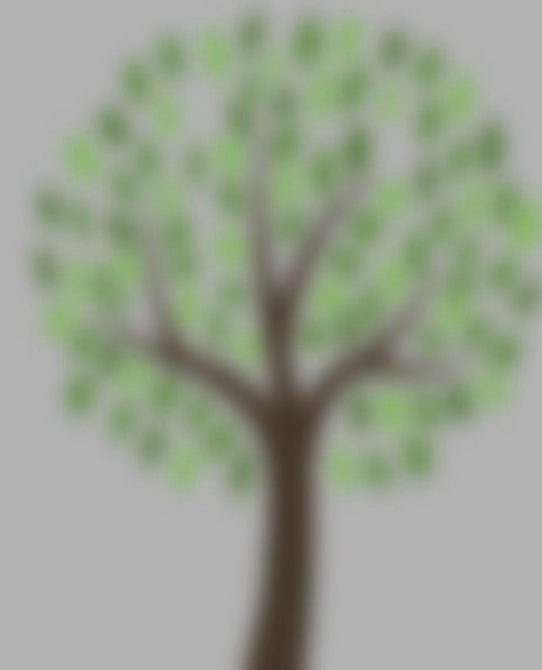
Lacks meaningful collaboration



Unfocused /unclear objectives



Too vague





# Feasibility Studies





# BARD



## Other funding opportunities

---



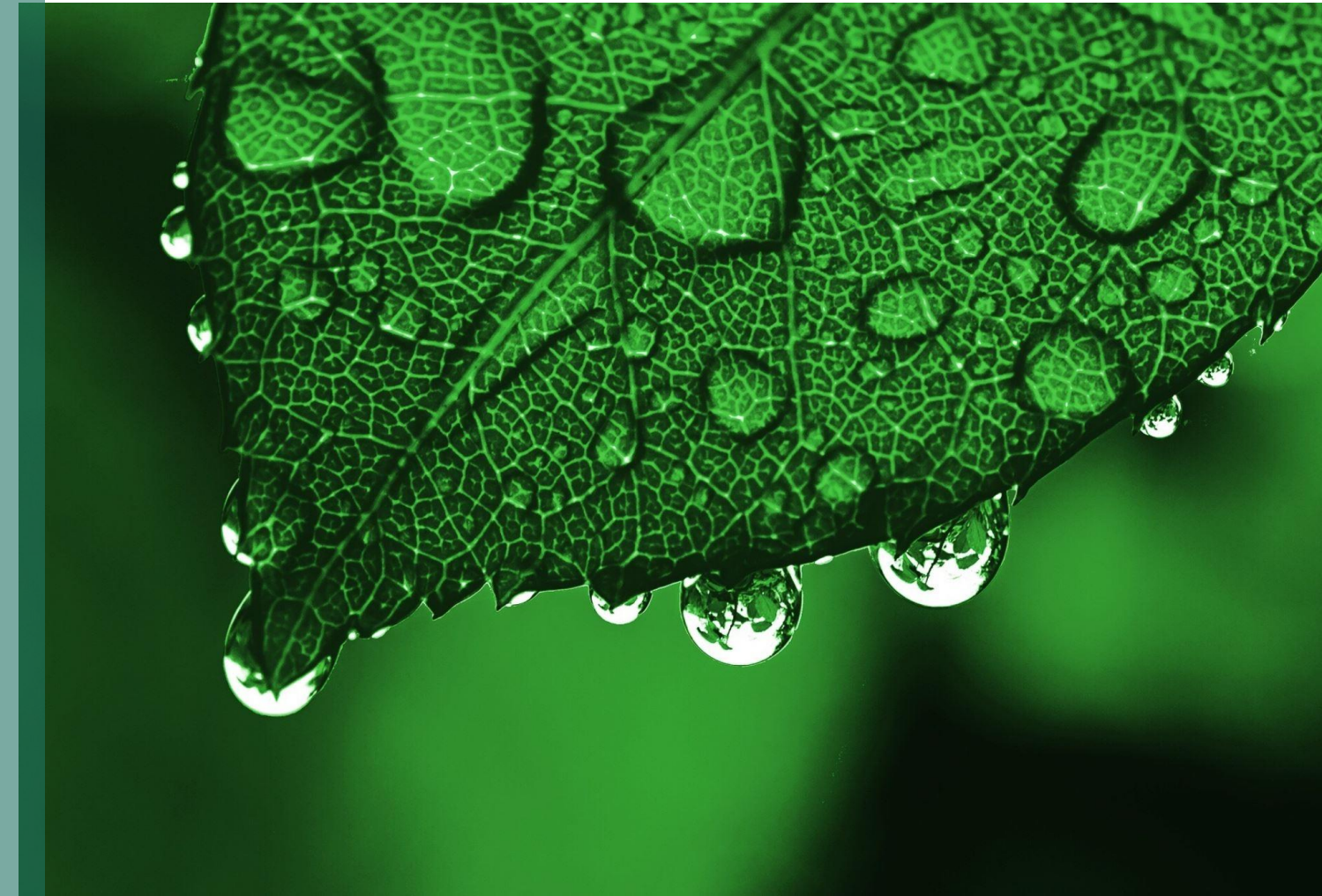
The United States – Israel Binational  
Agricultural Research & Development Fund



# Fellowships and workshops

- The Vaadia-BARD Postdoctoral Fellowship Program  
Award duration: 1-2 years
- The BARD Graduate Student Fellowship  
Award duration: 2-6 months
- Senior Research Fellowship  
Award duration: 2-12 months
- The BARD International Workshop grant

**Next submission date: January 17<sup>th</sup>, 2022**



# Academia-to-industry Partnership B-Lever

- At the end of the second year of a BARD-supported project, U.S. and Israeli joint research teams under BARD may link to a commercial entity from either country.
- BARD-supported scientists can collaborate with the U.S. and/or Israeli business, so the results of the combined research will enhance the development of a marketable technology, product or service.

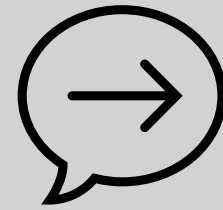
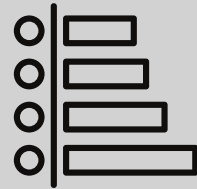




# Looking for a partner?

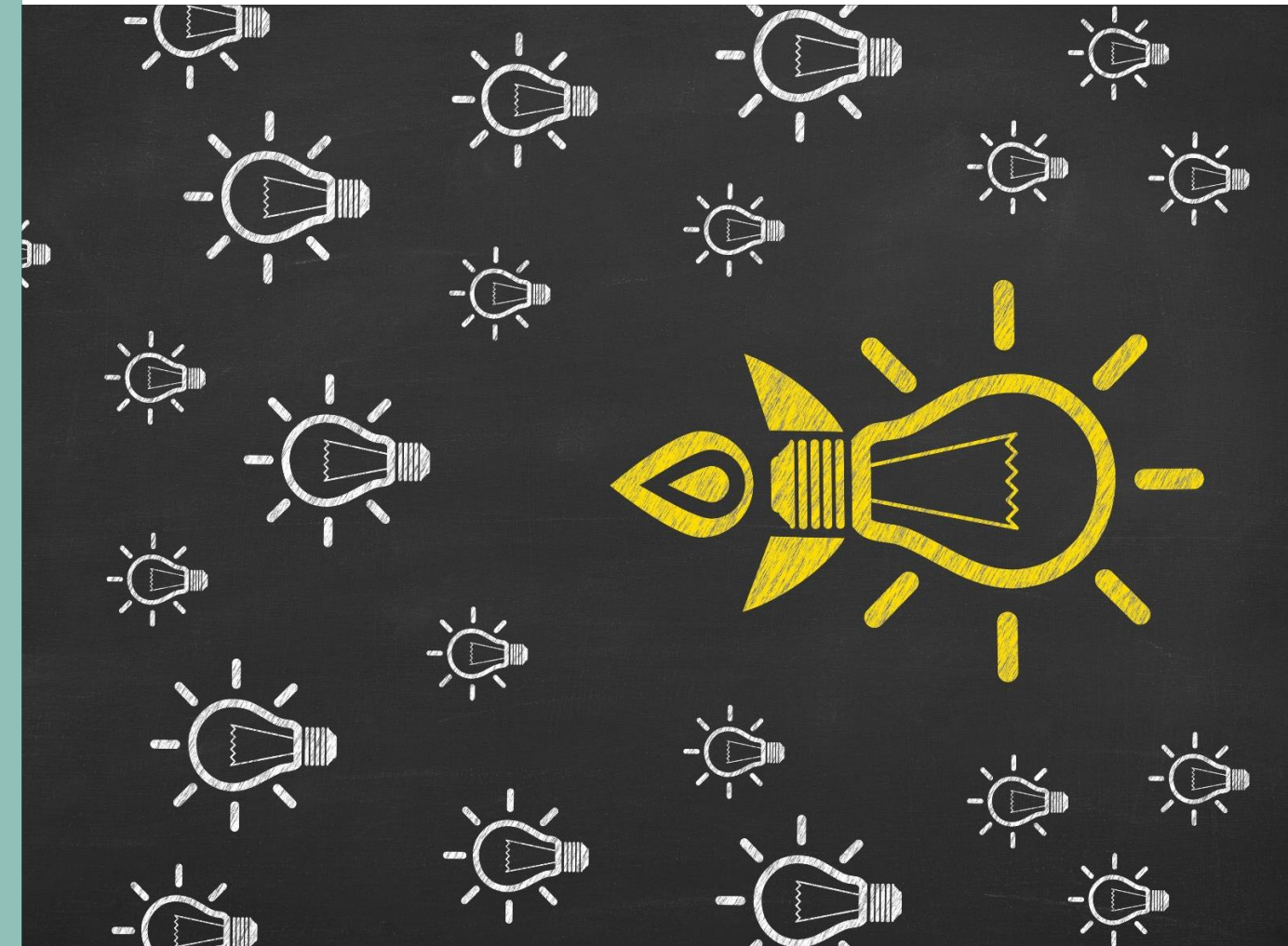


CV



Research topic

Email: [Haim@bard-isus.com](mailto:Haim@bard-isus.com)



# QUESTIONS?

# COMMENTS?

---

<https://www.bard-isus.com/FAQ>

Proposal Guidelines [Download](#)

news@BARD-isus.com



The United States – Israel B  
Agricultural Research & Dev

